



Marie Skłodowska- Curie RISE
MAPS-LED

Multidisciplinary Approach to Plan Smart Specialisation Strategies
for Local Economic Development



Case Study

Cluster: Performing Arts

Policy Initiative: Boston Innovation District

Preliminary Insights from Cluster-led Initiative Analysis

Working Package No. 2 Cluster Policy and Spatial Planning

Claudio Colombo/Laura Biancuzzo
PAU unit

06.06.2016

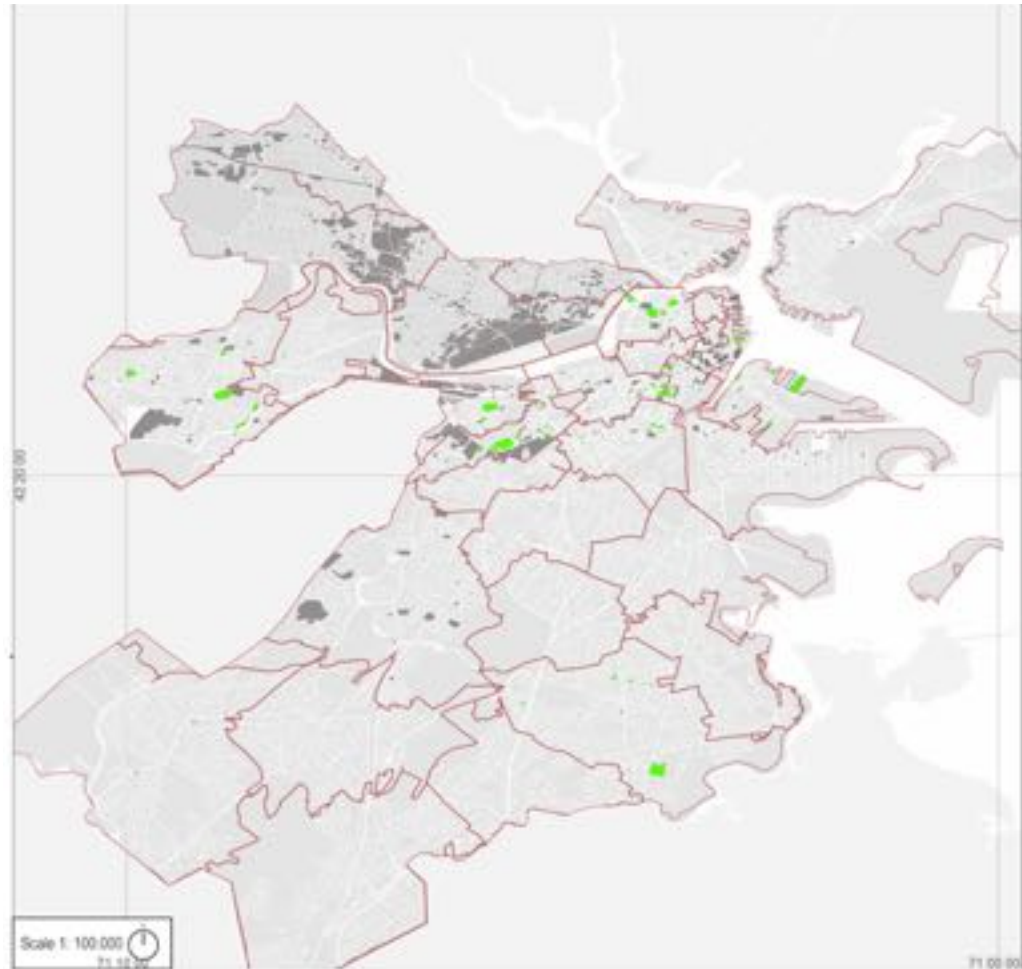
Northeastern University, Boston, MA, USA
Department of Economics

MAPS-LED “Multidisciplinary Approach to Plan Smart Specialisation Strategies for Local Economic Development” is a Marie Skłodowska-Curie RISE research project funded by the European Union’s HORIZON 2020 program for Research and Innovation under the Grant Agreement 645651

DISCLAIMER: The information appearing in this document has been prepared in good faith and represents the opinions of the authors. The authors are solely responsible for this publication and it does not represent the opinion of the European Commission or its Research Executive Agency. Neither the authors nor the European Commission or its Research Executive Agency are responsible or any use that might be made of data including opinions appearing herein.

Cluster Localization

7.1 Urban Level Cluster Localisation NAICS - Land Use Association City of Cambridge and Boston (MA) 2013

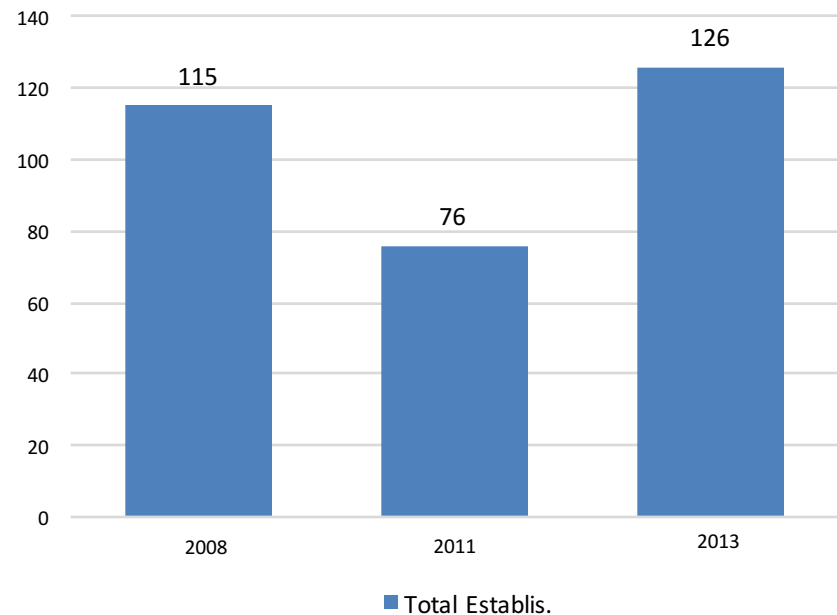


Key indicators

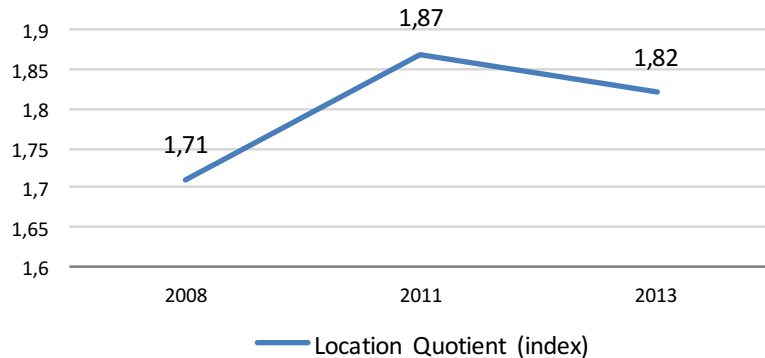
PERFORMANCE at County Level



Number of Establishments per NAICS and Zip Code at Urban Level



SPECIALIZATION at County Level



* Start year 1998.

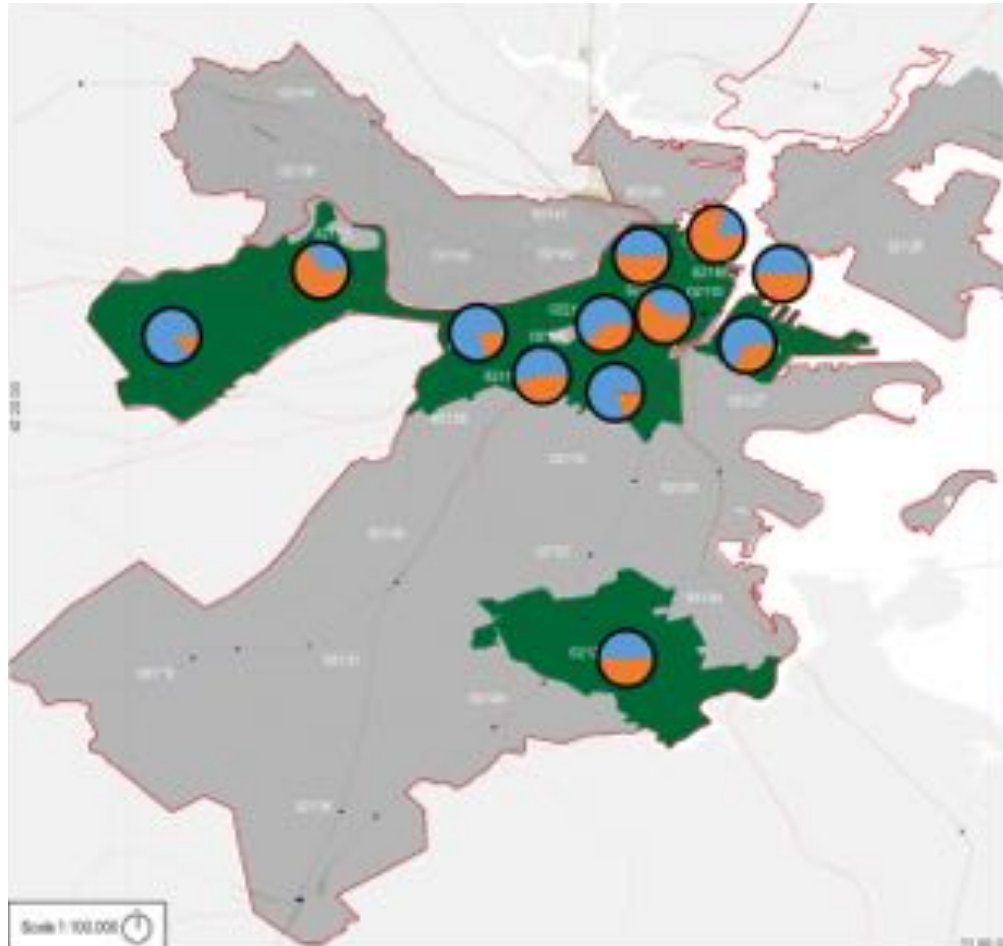
** <http://www.clustermapping.us/content/cluster-mapping-methodology>

Patent Count Growth data N/A

Subcluster : Performing Artists; Promoters and Managers.

Cluster Structure

6.10 Performing Arts
City of Boston (MA)
Cluster Occurrence per BpCode





Marie Skłodowska-Curie RISE
MAPS-LED

Multidisciplinary Approach to Plan Smart Specialisation Strategies
for Local Economic Development



First findings on spatial oriented approach at urban level

Performance
Establishment
Increase GrowthRate
Cluster Scattered
PerformingArts SuffolkCounty
LocationQuotient
Seaport KeyIndicator
Specialization

MAPS-LED First Mid-term Meeting

06.06.2016


Northeastern University, Boston, MA, USA



BID Localization

4a.2 Cambridge and Boston
BioCity







Marie Skłodowska- Curie RISE
MAPS-LED

Multidisciplinary Approach to Plan Smart Specialisation Strategies
for Local Economic Development



BID Brief Description

TIPOLOGY	START UP YEAR	FOUNDER	TARGETED BUSINESS SECTOR
Public	2009	Mayor Menino	All Sectors

**BOSTON'S
INNOVATION
DISTRICT**



BID Brief Description

MISSION	OBJECTIVES	ACTION	FUTURE VISION
<p>Transforming an underutilized area of the city in a hub for knowledge workers and creative jobs</p>	<ul style="list-style-type: none"> - Provide opportunities for testing groundbreaking technologies - Share Innovation - Promote collaboration through the creation of clusters of innovative people - Provide amenities for flexible lifestyles - Support social infrastructure to foster an innovation ecosystem 	<p>The public sector has adopted several tools such as zoning regulations, permitting processes, the development of physical infrastructure, and tax incentives in order to incentivize the companies to move into the District creating new jobs.</p>	<p>Replicate the redevelopment model in the high-poverty neighborhood Dudley Square (Roxbury).</p>



Actions

	TIPOLOGY	START UP YEAR	SECTOR	TARGETED BUSINESS SECTOR
MassChallenge	Not for Profit	2009	Start up Accelerator	All Sectors
Vertex Pharmaceuticals	Private	1989	Pharmaceutical Company	Pharmaceutical
WeWork	Private	2010	Co Working Space	All Sectors



MassChallenge

MISSION	OBJECTIVES	ACTION	FUTURE VISION
Catalyze a startup renaissance to create jobs, empower individuals and promote entrepreneurship.	- Promote innovation, collaboration and commercialization	4 month accelerator program. They strengthen and accelerate entrepreneurs by providing them high-quality, personalized mentorship and by connecting them to potential team members, advisors, customers, and sponsors.	Expand to a further 10 cities internationally by 2020, creating 30,000 direct, high-paying jobs, and 150,000 indirect jobs. Empower all players in the global ecosystem to support entrepreneurs and share in the creative innovation they inspire.
	- Address the seed-stage investment gap, empowering novice entrepreneurs		
	- Provide educational opportunities for entrepreneurs		
	- Showcase entrepreneurship assets and infrastructure locally, nationally and internationally		



Vertex Pharmaceutical

MISSION	OBJECTIVES	ACTION	FUTURE VISION
<p>Discovering, developing, manufacturing and commercializing medicines for serious diseases.</p>	<ul style="list-style-type: none"> - The business is focused on developing and commercializing therapies for the treatment of cystic fibrosis 	<p>Discover and develop drug candidates by combining transformative insights into the causes of serious diseases with innovative approaches to therapeutics.</p> <p>Access to laboratory space for Boston Public Schools.</p>	<p>Continue investing in our research programs and fostering scientific innovation in order to identify and develop transformative medicines with a focus on CF and other genetic diseases, oncology, pain and neurology.</p>
	<ul style="list-style-type: none"> - Strengthen STEM education 		



WeWork

MISSION	OBJECTIVES	ACTION
<p>Creating a world where people work to make a life, not just a living.</p>	<p>- Providing the space, community, and services for a good working environment.</p>	<p>Providing the spaces for teams of any size</p>
		<p>Events - formal and informal - to encourage connections</p>
		<p>Connecting virtually co-workers with other members around the world.</p>



Marie Skłodowska- Curie RISE
MAPS-LED
Multidisciplinary Approach to Plan Smart Specialisation Strategies
for Local Economic Development



Thank you!

Claudio Colombo/Laura Biancuzzo
PAU Unit

Marie Curie ER/ESR – MAPS_LED Project

MAPS-LED First Mid-term Meeting
30.05.2016
Northeastern University, Boston, MA, USA