



Marie Skłodowska- Curie RISE
MAPS-LED
Multidisciplinary Approach to Plan Smart Specialisation Strategies
for Local Economic Development



The MAPS-LED GIS

MAPS-LED First Mid-term Meeting
06/07.06.2016
Northeastern University, Boston, MA, USA

PAU UNIT

Methodological Description of WP1 and WP2 activities – PAU Unit

Giuseppe Umberto Cantafio

MAPS-LED “Multidisciplinary Approach to Plan Smart Specialisation Strategies for Local Economic Development” is a Marie Skłodowska-Curie RISE research project funded by the European Union’s HORIZON 2020 program for Research and Innovation under the Grant Agreement 645651

DISCLAIMER: The information appearing in this document has been prepared in good faith and represents the opinions of the authors. The authors are solely responsible for this publication and it does not represent the opinion of the European Commission or its Research Executive Agency. Neither the authors nor the European Commission or its Research Executive Agency are responsible or any use that might be made of data including opinions appearing herein.



Marie Skłodowska- Curie RISE
MAPS-LED
Multidisciplinary Approach to Plan Smart Specialisation Strategies
for Local Economic Development



Outline

1. Objective
2. Concept
3. Methodology
 - A. Cluster Morphology at County level
 - B. Cluster Identification at Urban level
 - C. MAPS-LED GIS Cluster Mapping: Cluster Spatialization at Urban level



Marie Skłodowska- Curie RISE
MAPS-LED

Multidisciplinary Approach to Plan Smart Specialisation Strategies
for Local Economic Development



Objective

Main goals of the WP2

To build an evidence-based methodology that investigate the spatial planning and governance-oriented features of cluster approach



Main aim of this activity

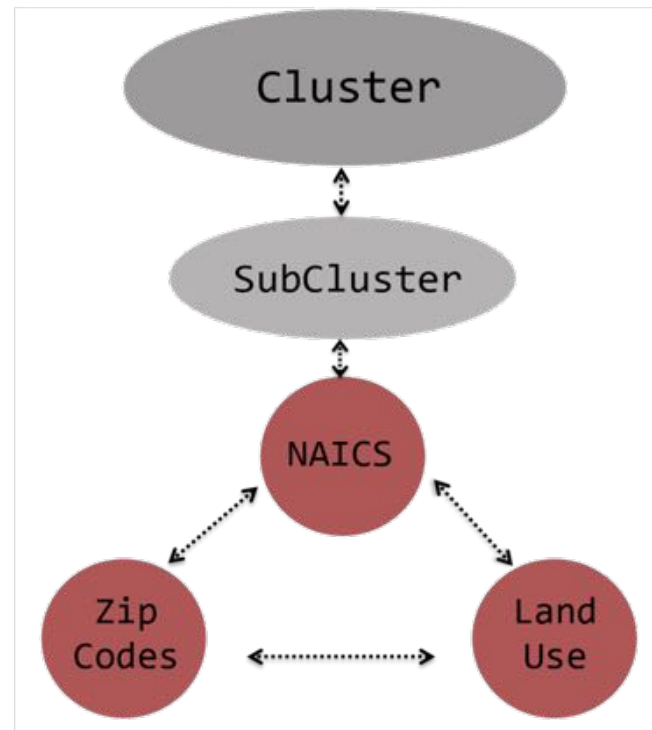
To highlight and analyze the relationship between cluster-oriented policies and spatial planning policies and the cluster policy effects/impacts on the urban fabric, using the lens defined during the WP1 of the project.



Cluster Spatialization

Concept

Explaining Clusters through Mapping Test Methodology





Marie Skłodowska- Curie RISE
MAPS-LED
Multidisciplinary Approach to Plan Smart Specialisation Strategies
for Local Economic Development

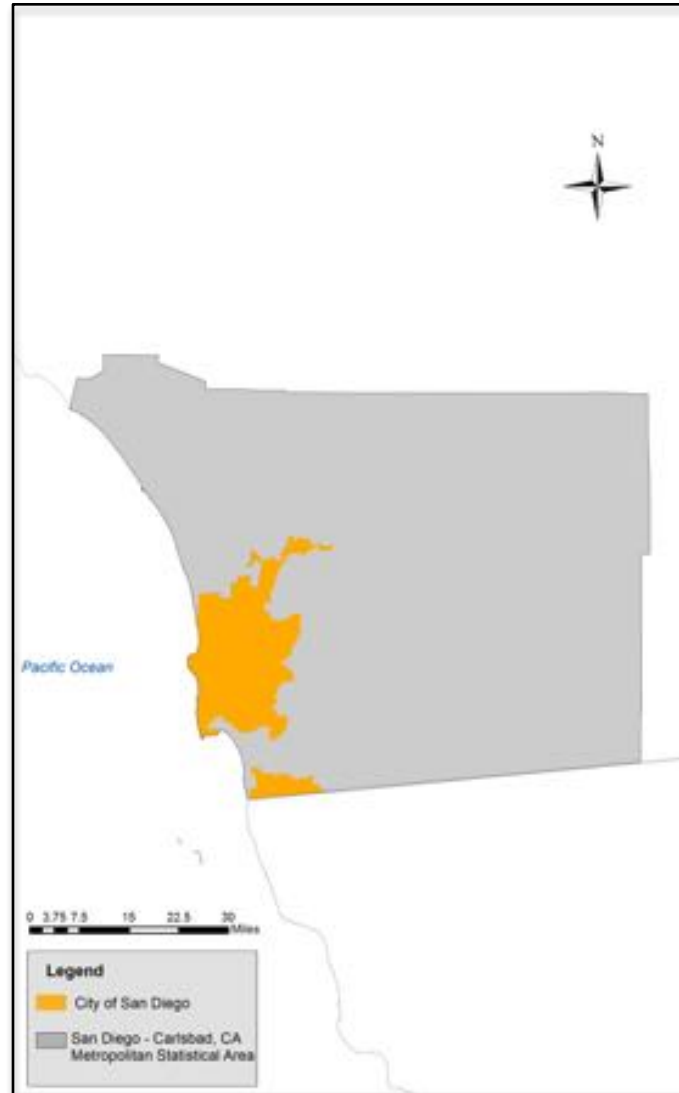


Methodology

Gathering of Worksheet Shapefiles.

GIS Map Building of GIS map of the Boston and San Diego Metropolitan Statistical Areas with the identification of counties and Boston city boundaries: after having downloaded shape files and metadata from official online sources, shape files have been added to the map's data frame.

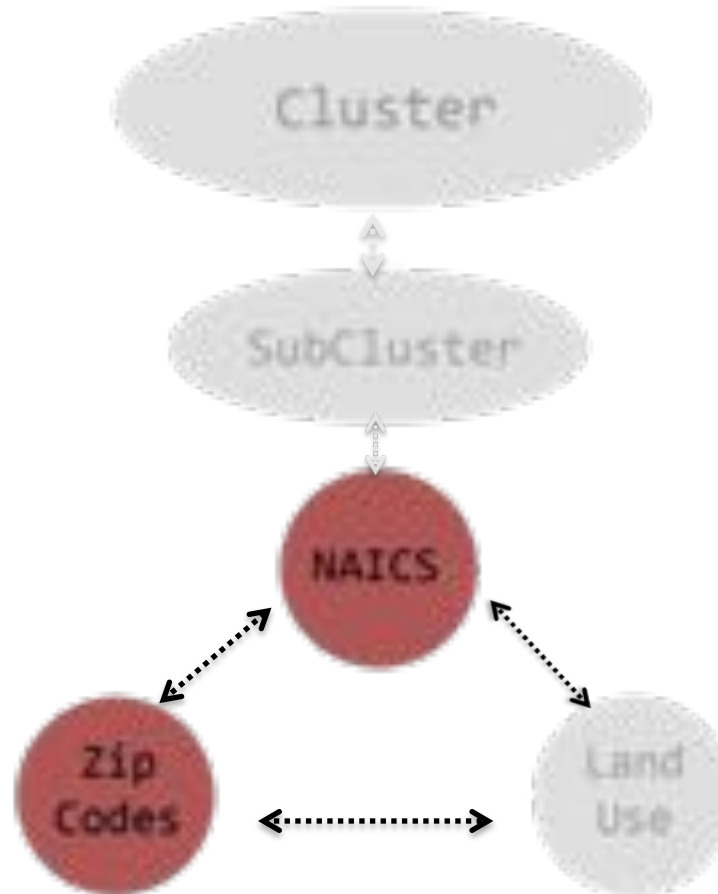
Spatial configuration of the Boston and San Diego Metropolitan Statistical Areas (MSA).



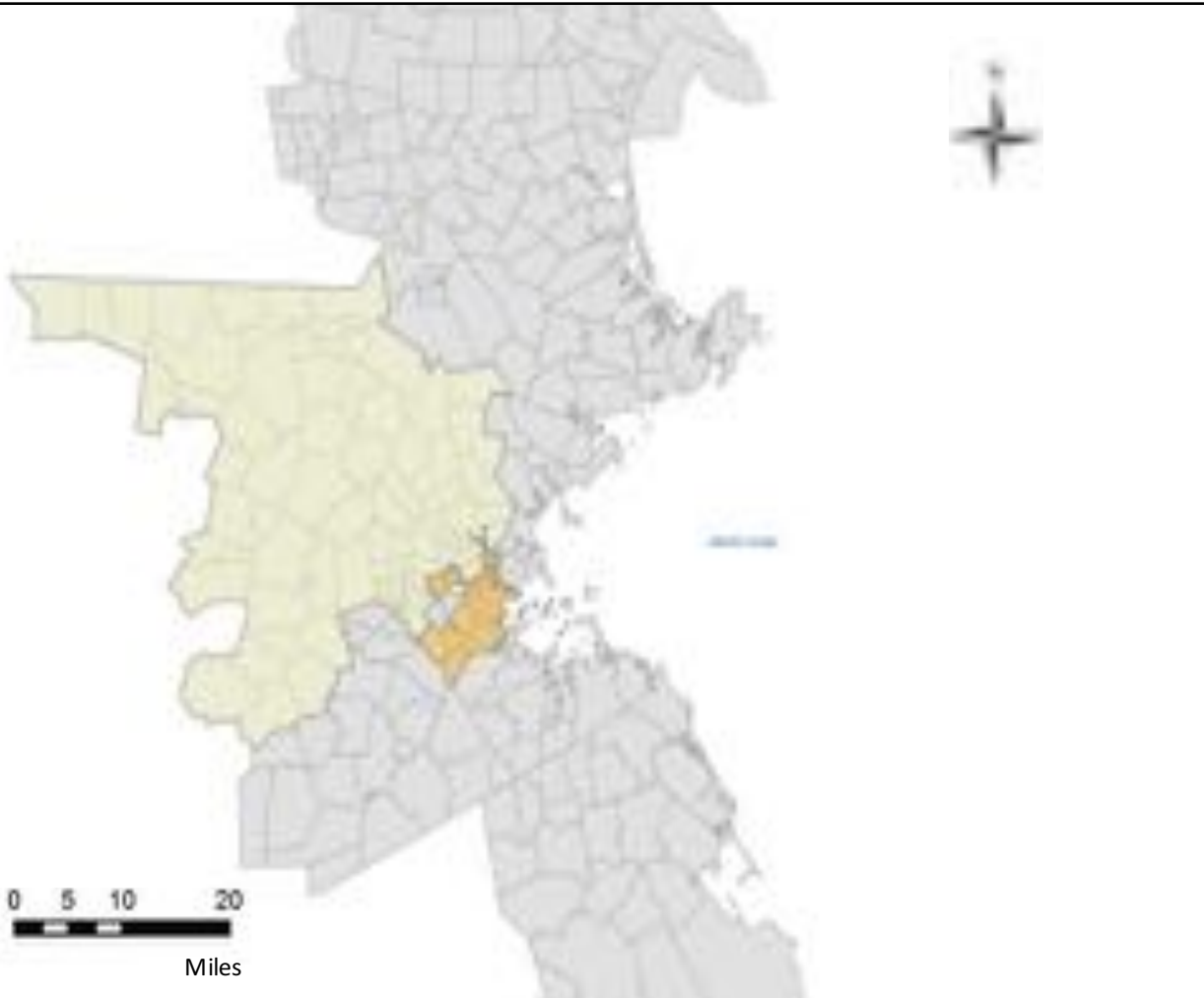
Authors' Elaboration

Methodology

NAICS Localization | Combining Zip Code and NAICS 2007



- Zip codes mapping of the selected counties within the MSA



Middlesex county: 83 zip codes
Suffolk county : 27 zip codes

Main Data Sources :
US Clustermapping (<http://www.clustermapping.us>)
US Census Bureau (<https://www.census.gov/>)



Methodology

County level



Zip Code level



NAICS

Zip code

- *Minimum territorial unit* within the analysis;
- Spatialization of establishments;

NAICS 2007 (*North American Industry Classification System*)

- “Standard used by Federal statistical agencies in classifying business establishments for the purpose of collecting, analyzing and publishing statistical data related to the US business economy”.

(Sources : United States Census Bureau - <http://www.census.gov>)

U.S. Census Bureau
AMERICAN FactFinder

CB0800CZ2 | 2008 County Business Patterns: ZIP Code Business Statistics: Zip Code Business Patterns by Employment Size Class

2008 Business Patterns

Geographic area name	2007 NAICS code	Meaning of 2007 NAICS code	Meaning of Employment size of establishment	Year	Number of establishments
ZIP 02138 (Cambridge, MA)	236117	New housing for-sale builders	Establishments with 1 to 4 employees	2008	1
ZIP 02138 (Cambridge, MA)	236117	New housing for-sale builders	Establishments with 5 to 9 employees	2008	0
ZIP 02138 (Cambridge, MA)	236117	New housing for-sale builders	Establishments with 10 to 19 employees	2008	0
ZIP 02138 (Cambridge, MA)	236117	New housing for-sale builders	Establishments with 20 to 49 employees	2008	0
ZIP 02138 (Cambridge, MA)	236117	New housing for-sale builders	Establishments with 50 to 99 employees	2008	0
ZIP 02138 (Cambridge, MA)	236117	New housing for-sale builders	Establishments with 100 to 249 employees	2008	0
ZIP 02138 (Cambridge, MA)	236117	New housing for-sale builders	Establishments with 250 to 499 employees	2008	0
ZIP 02138 (Cambridge, MA)	236117	New housing for-sale builders	Establishments with 500 to 999 employees	2008	0
ZIP 02138 (Cambridge, MA)	236117	New housing for-sale builders	Establishments with 1,000 employees or more	2008	0

Zip Code Business Statistics worksheets

(Source: US Census Bureau - Fact Finder sample charts)

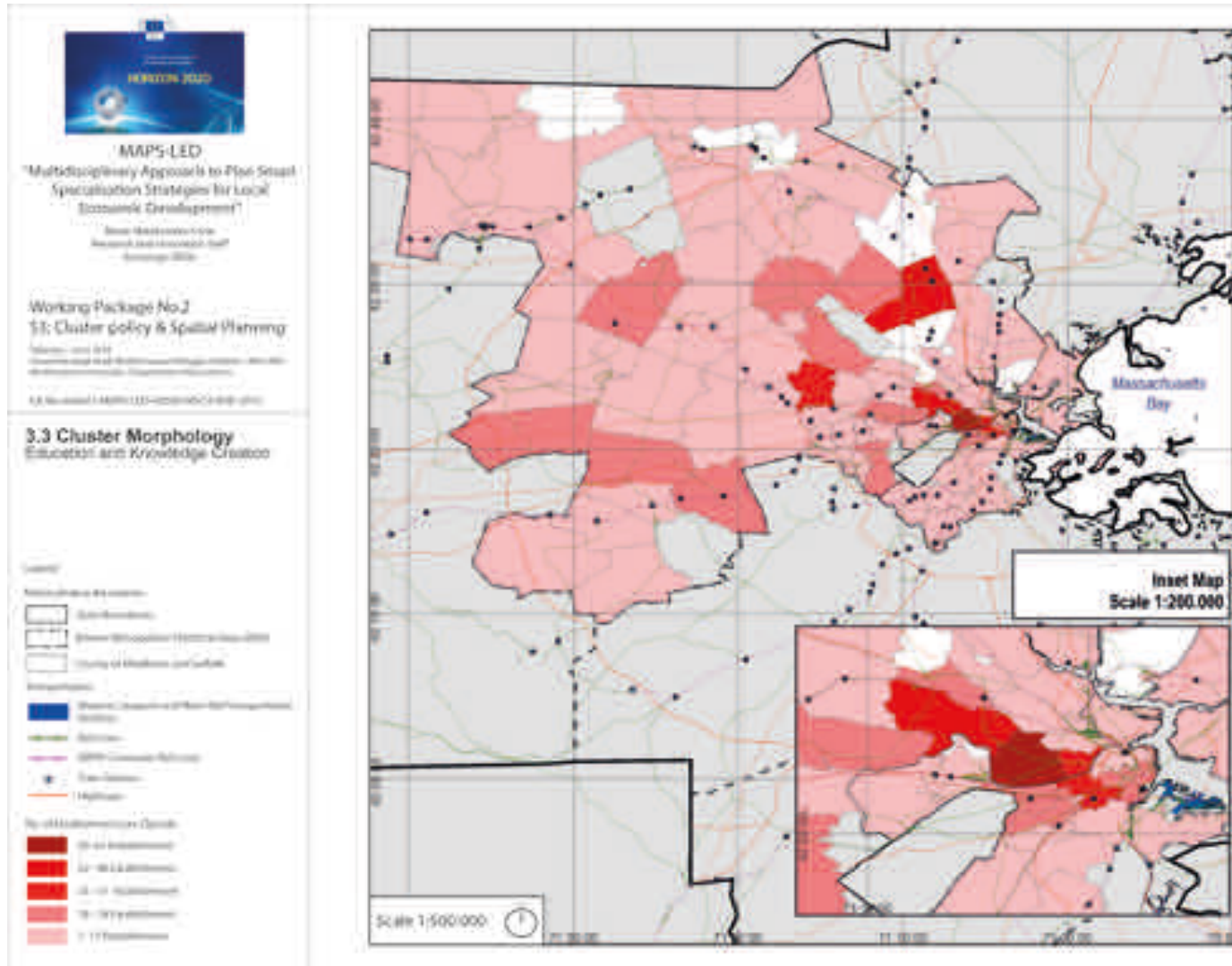
6-digit **NAICS** code (*North American Industry Classification System*) have been collected for the year 2013, 2011 and 2008, providing:

- association of economic activities with specific territorial areas (Zip code areas);
- Number of establishments for every NAICS in each Zip Code;
- Meaning of the number of employees for Zip code (size of establishments);
- **The match of spatial and economic data allows to identify either the presence or absence of economic activities (subcluster) in specific areas (Zip Code).**

Establishments | A single physical location where business is conducted or where services or industrial operations are performed.

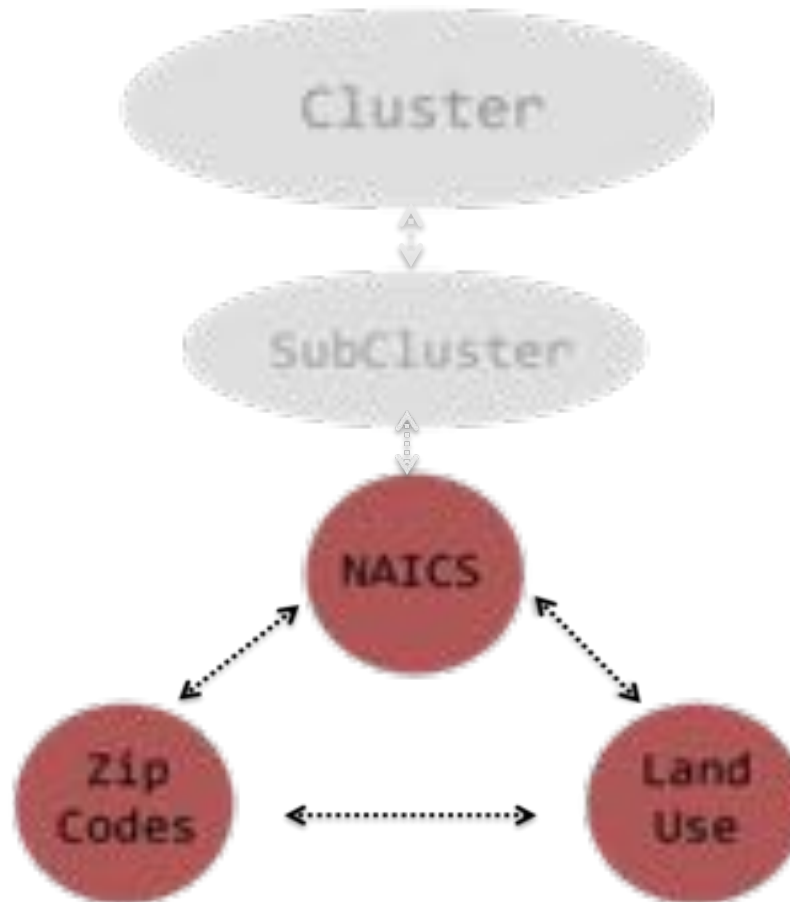
(Source: US Census Bureau)

Cluster Morphology at County Level



MAPS-LED GIS Cluster Mapping: Cluster Spatialization at Urban level

Merge of Zip Codes, NAICS 2007 and Land Use



MAPS-LED GIS Cluster Mapping: Cluster Spatialization at Urban level

Main sources for comparing NAICS 2007 with Land Use:

- American Planning Association (2005), *Practice Land-Use Classification*. Zoning Practice. 9, p. 1-12.
- Land Development Code Commerce City, Colorado (2015), Article V. Uses and Accessory Structures. P. 1-111.
- Horning, J., Geneidy, A., Krizek, K. (2008), Access to Destinations – Parcel Level Land Use Data Acquisition and Analysis for Measuring Non Auto-Accessibility. 6, p. 1-43.

Destination Category	Reclassified Specific Destination	Original NAICS Code & Classification
Financial Services	522000 – Banking	522110 Commercial Banking 522120 Savings Institutions 522130 Credit Unions Other Depository Credit Intermediation 522190
	521000 – Other Financial/Insurance	All other Financial and Insurance (520000) classifications

MAPS-LED GIS Cluster Mapping: Cluster Spatialization at Urban level

The data set derives from several sources, like the VISION assessing data system.

In an effort to clarify land use type the data has been cleaned and subdivided to break the original use code into several different fields. Land use status is up to date as of July 1, 2014.

Land Use map reflects the land resources and types of land use in the national economy.

Source: Nikolaevskaia, E. M. *Karty*, 1970.

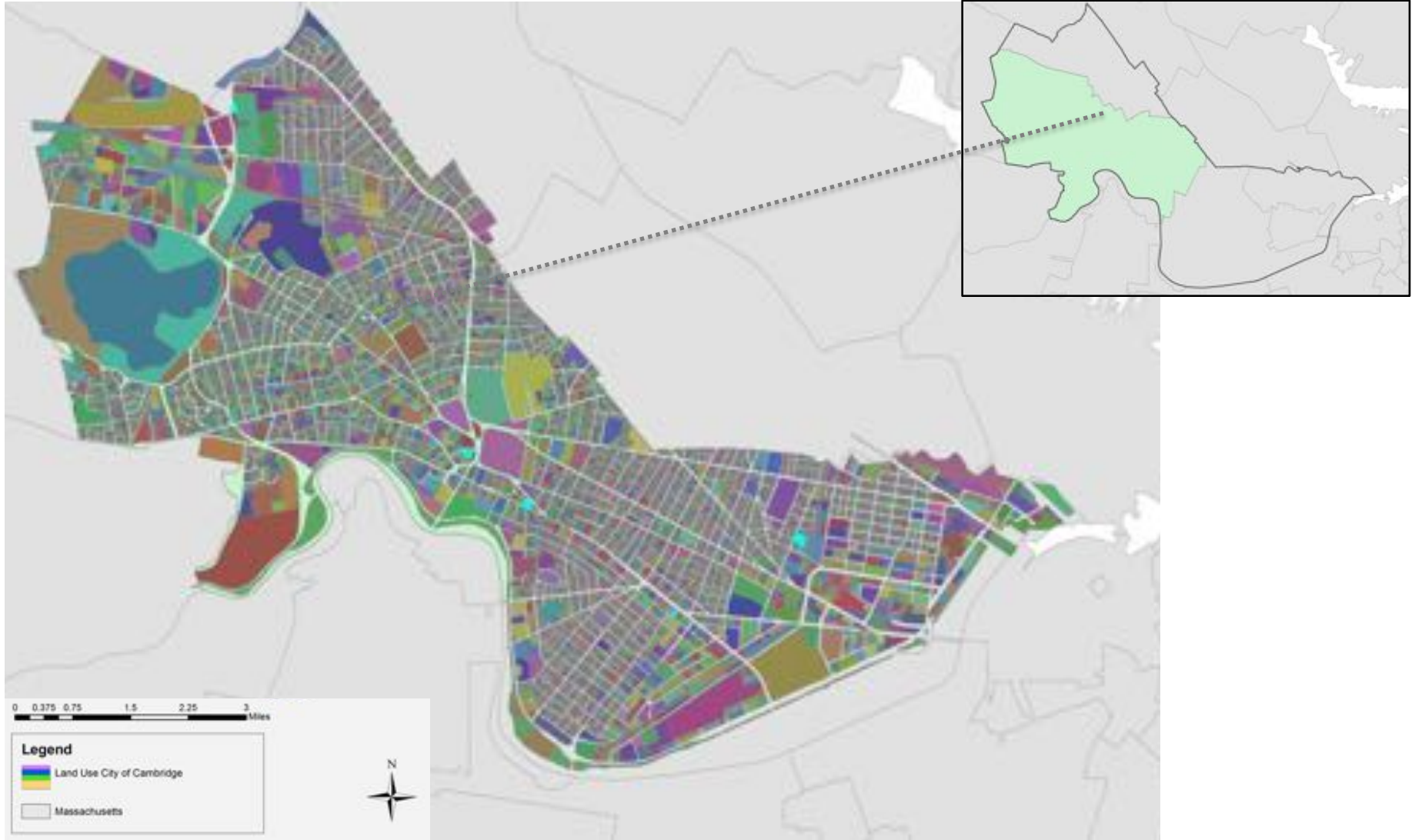
The following table lists a sample of land use codes found in the data layer:

Land Use Code	Land Use Description	Category
101	MXD SNGL-FAM-RE	Mixed Use Residential
104	MXD TWO-FAM-RES	Mixed Use Residential
105	MXD THREE-FM-RE	Mixed Use Residential
111	MXD 4-8-UNIT-AP	Mixed Use Residential
112	MXD >8-UNIT-APT	Mixed Use Residential
121	MXD BOARDING-HS	Mixed Use Residential
13	MULTIUSE-RES	Mixed Use Residential
31	MULTIUSE-COM	Mixed Use Commercial
41	MULTIUSE-IND	Mixed Use Industrial

Source: www.cambridgema.gov

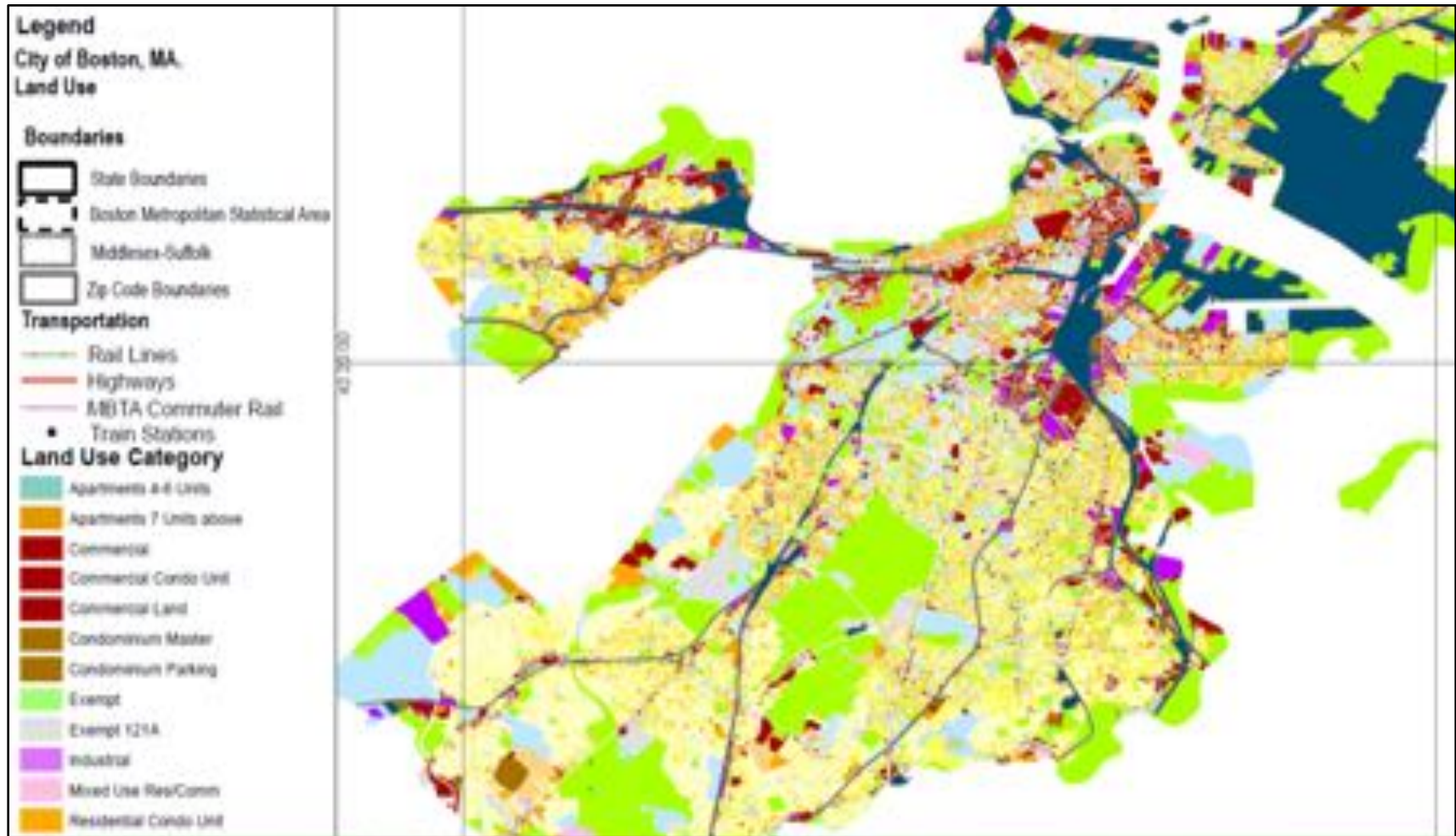
Land Use of the City of Cambridge, MA

Zip Code 02138



Authors' Elaboration

Land Use of the City of Boston, MA



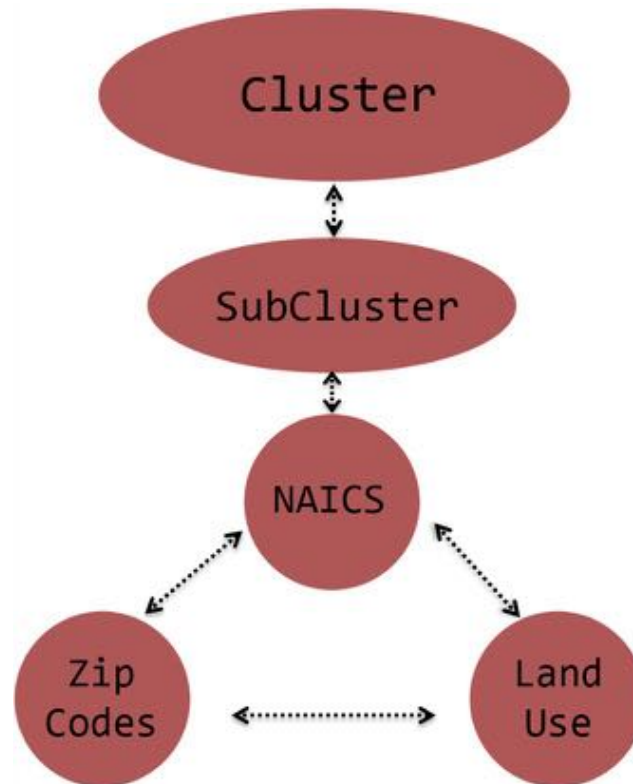
Authors' Elaboration



Massachusetts Government				Cambridge, Middlesex, MA			LAND USE to NAICS 2007 association/per Cluster				
Land Use Code 1st digit level	Land Use Code 2nd digit level	Land Use Code 3rd digit level	Land Use Code	Land Use Category	Land Use Description	2007 NAICS code	Meaning of 2007 NAICS code	SubCluster	Cluster		
Code Description		
9	Exempt Property	94	Educ. Private	941	Secondary Level	941	Private Secondary Education School	611210	Junior Colleges	Colleges, Universities, and Professional Schools	Education and Knowledge Creation
								611310	Colleges, Universities, and Professional Schools	Colleges, Universities, and Professional Schools	Education and Knowledge Creation

MAPS-LED GIS Cluster Mapping: Cluster Spatialization at Urban level

Subcluster Spatialization: Matching NAICS 2007 and Porter's Cluster Definition





Marie Skłodowska- Curie RISE
 MAPS-LED
 Multidisciplinary Approach to Plan Smart Specialisation Strategies
 for Local Economic Development



Cluster Name:
Cluster Code:
Description:

Education and Knowledge Creation
13

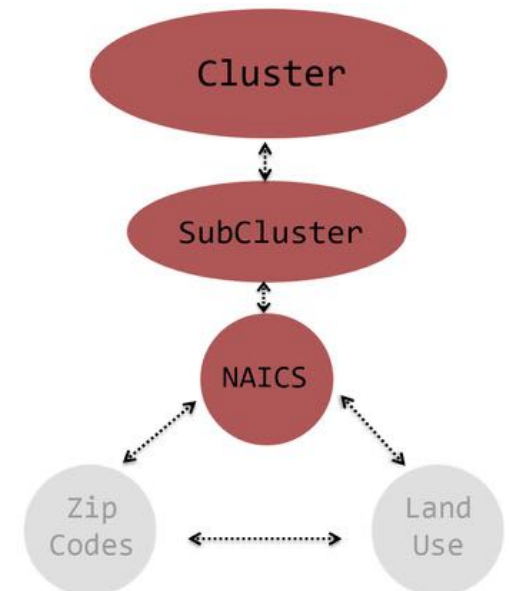
This cluster contains all educational and training institutions, as well as related supporting establishments. It also includes research and development institutions in biotechnology, physical sciences, engineering, life sciences, and social sciences.

Number of Industries: 15

NAICS	NAICS Name	Subcluster Name
611410	Business and Secretarial Schools	Training Programs
611420	Computer Training	Training Programs
611430	Professional and Management Development Training	Training Programs
611512	Flight Training	Training Programs
611513	Apprenticeship Training	Training Programs
611630	Language Schools	Training Programs
611691	Exam Preparation and Tutoring	Training Programs
611699	All Other Miscellaneous Schools and Instruction	Training Programs
611210	Junior Colleges	Colleges, Universities, and Professional Schools
611310	Colleges, Universities, and Professional Schools	Colleges, Universities, and Professional Schools
611710	Educational Support Services	Educational Support Services
541711	Research and Development in Biotechnology	Research Organizations
541712	Research and Development in the Physical, Engineering, and Life Sciences (except Biotechnology)	Research Organizations
541720	Research and Development in the Social Sciences and Humanities	Research Organizations
817920	Professional Organizations	Professional Organizations

“Clusters are geographic concentrations of industries related by knowledge, skills, inputs, demand, and/or other linkages.” (Porter, 2014)

Subcluster: “Conceptual subcategories that help to describe the content of each cluster. These subclusters are based mainly on industry definitions”. (Porter, 2014)

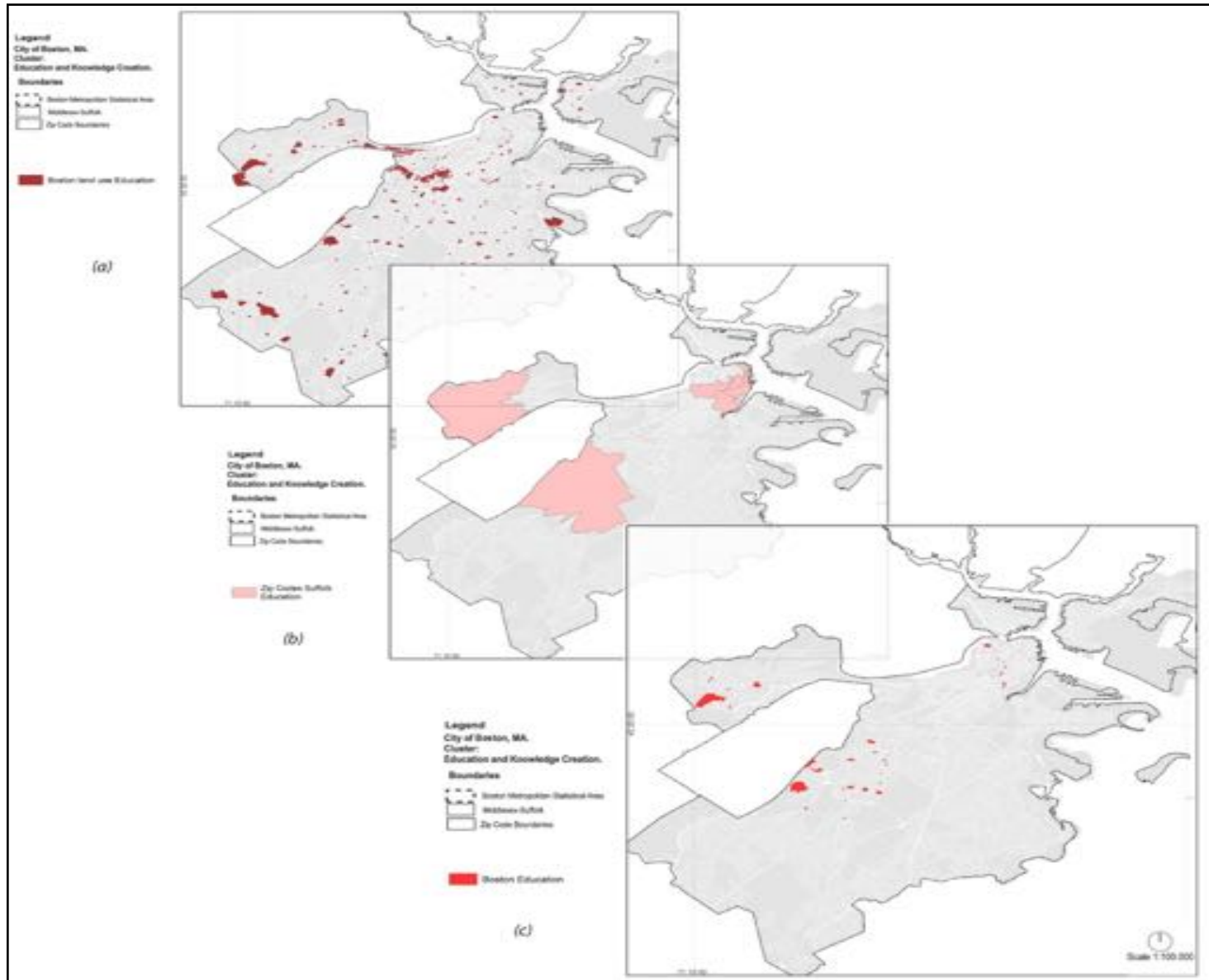


Source:

<http://www.clustermapping.us/sites/default/files/files/page/Traded%20Clusters%20Appendix.pdf> [accessed 08/10/2015]

MAPS-LED GIS Cluster Mapping: Cluster Spatialization at Urban level

NAICS-LAND USE Association to Spatialize Clusters at the Urban Level (city of Boston)



MAPS-LED GIS Cluster Spatialization: Updated Methodology



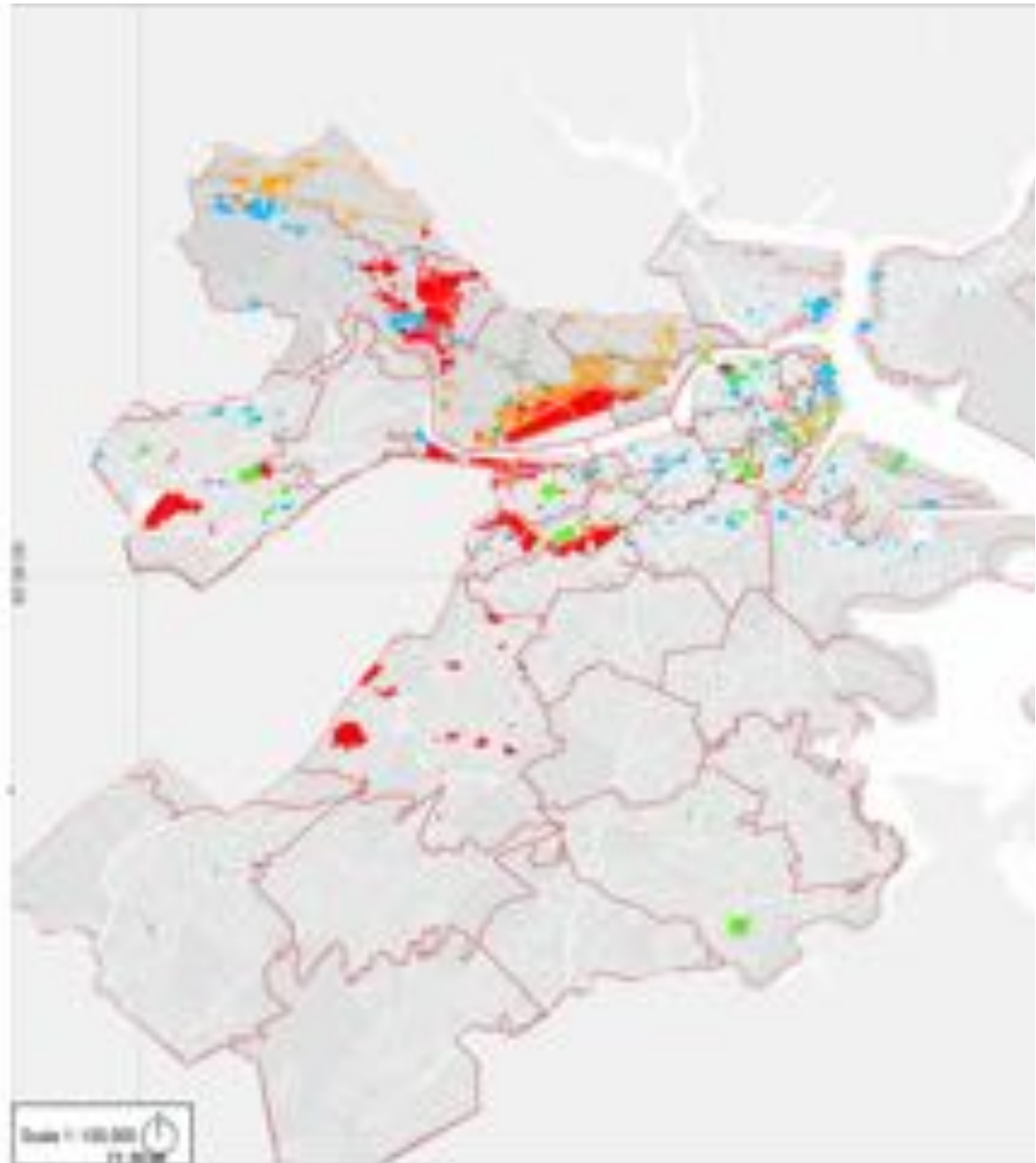
MAPS-LED
Multidisciplinary Approach to Plan Smart Growth
Spatial Strategies for Urban
Economic Development

Urban Economics Core
Research and Innovation Hub
MIT/UMass Lowell

Working Package No.2
03 Cluster policy & Spatial Planning

March 2016
©2016 MIT and the Massachusetts Institute of Technology. All rights reserved. See www.mit.edu for more information.
See also: www.mit.edu/~wp2 | www.umasslowell.edu

7.1
Urban Level Cluster Localization
MAPS-LED and User Association
City of Cambridge and Boston (MA)
2015



June
2016

Authors'
Elaboration



Marie Skłodowska- Curie RISE
MAPS-LED
Multidisciplinary Approach to Plan Smart Specialisation Strategies
for Local Economic Development



Thank you ! ! !

for your attention

MAPS-LED First Mid-term Meeting

06/07.06.2016

Northeastern University, Boston, MA, USA

PAU UNIT

Methodological Description of WP1 and WP2 activities – PAU Unit

Giuseppe Umberto Cantafio

MAPS-LED “Multidisciplinary Approach to Plan Smart Specialisation Strategies for Local Economic Development” is a Marie Skłodowska-Curie RISE research project funded by the European Union’s HORIZON 2020 program for Research and Innovation under the Grant Agreement 645651

DISCLAIMER: The information appearing in this document has been prepared in good faith and represents the opinions of the authors. The authors are solely responsible for this publication and it does not represent the opinion of the European Commission or its Research Executive Agency. Neither the authors nor the European Commission or its Research Executive Agency are responsible or any use that might be made of data including opinions appearing herein.